

CARTONI

PROFESSIONAL CAMERA SUPPORT

MAXIMA

S.O



USER'S MANUAL & Maintenance



The new **MAXIMA 5.0** is the ultimate answer for Digital Cinematography with heavy duty packages. Its outstanding patented counterbalance compensates payloads from zero to 50 kg, with “perfect balance” throughout the 180° tilt range. The patented continuous fluid drag system performs from almost freewheeling to extremely consistent drag for maximum versatility and perfect diagonal shots.

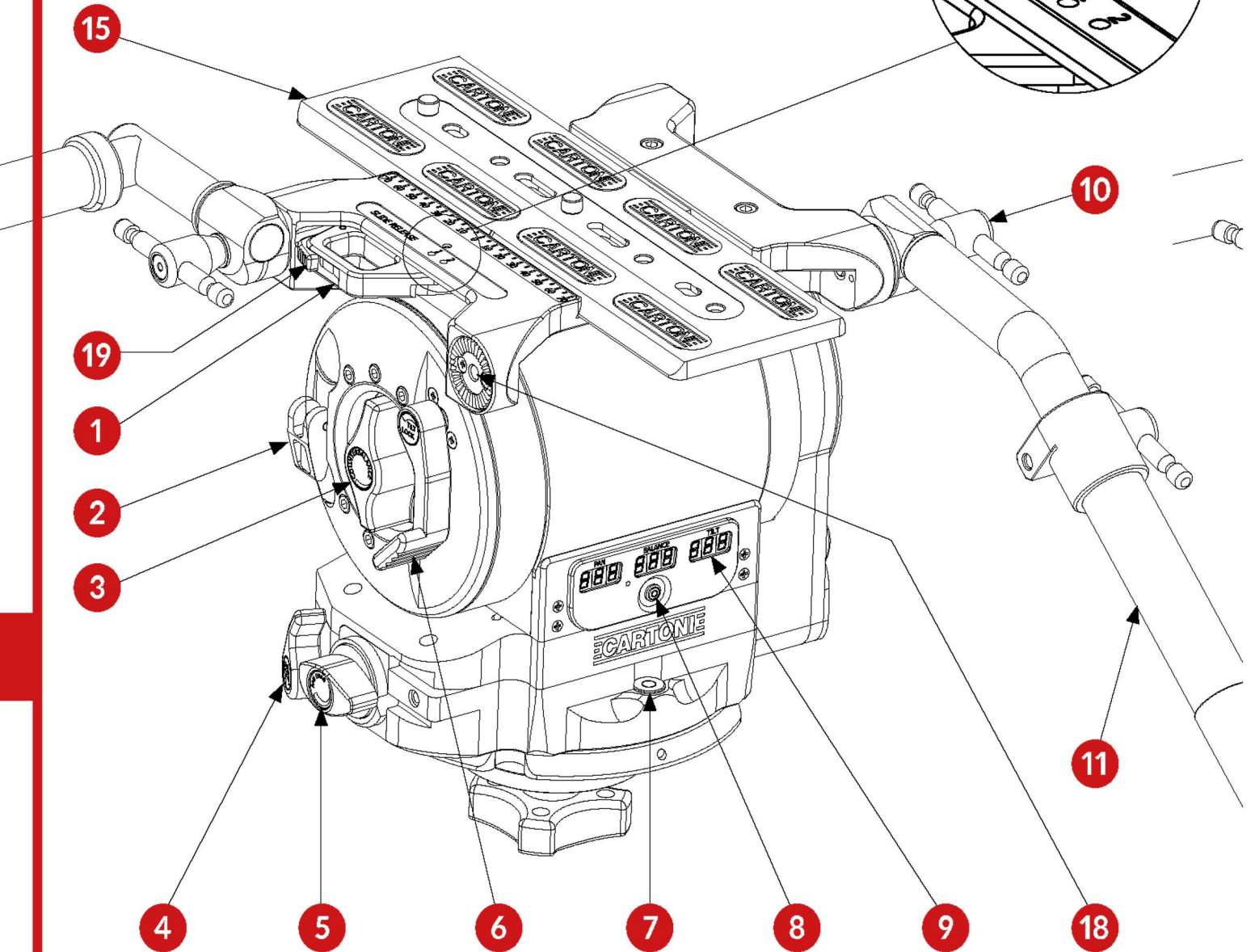
The **MAXIMA 5.0** knobs and levers are ergonomically placed to ensure camera operators complete ease-of-use in any situation, whether in the studio, location or during outside shooting. Drag and counterbalance settings are monitored on a large digital display.

The large sliding camera plate is compatible with Arri, Sony and O’Connor slides. The head comes with a telescopic pan bar and a short front pan bar. With the classic Mitchell base the **MAXIMA 5.0** interfaces with all flat base Mitchell tripods and platforms.

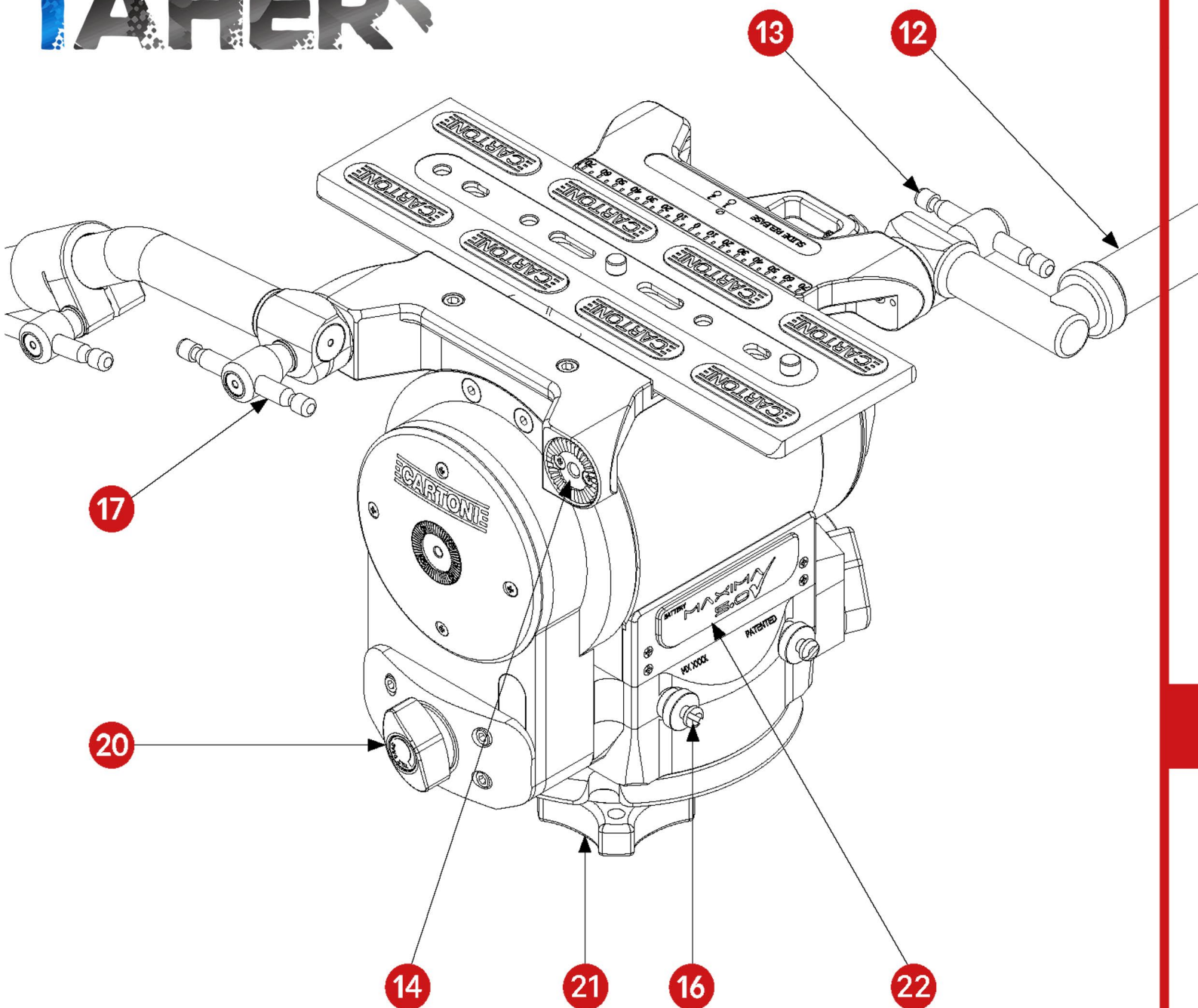
Optional 150mm bowl base can be easily applied.

- ✓ Before using the **MAXIMA 5.0** Fluid Head, please make sure to read this user’s & maintenance manual;
- ✓ Before installing the Fluid Head on the tripod check the tripod stability;
- ✓ Check that the Camera payload (including lenses and accessories) is lower than the maximum capacity of the **MAXIMA 5.0** Fluid Head;
- ✓ Before installing the Camera make sure the **MAXIMA 5.0** is in good conditions and bares no evident damages.

2. OPERATING ELEMENTS



- | | |
|----------------------------------|--|
| 1 Slide lock lever | 7 Illuminated bubble level |
| 2 Horizontal lock lever | 8 Illuminated bubble level and display light button |
| 3 Counterbalance selector | 9 Digital display |
| 4 Pan lock lever | 10 Extensible handle attachment lever |
| 5 Pan drag selector | |
| 6 Tilt lock lever | |



11 Extensible pan handle

12 Short handle

13 Short handle attachment lever

14 Short handle attachment rosette

15 Camera plate

16 Tool box attachment

17 Handle attachment lever

18 Handle attachment rosette

19 Safety button slide lock lever

20 Tilt drag selector

21 Tie down knob

22 Battery housing

Minimum payload	0 Kg	0 lbs
Maximum payload	50 Kg	110 lbs
Weight	13 Kg	28.7 lbs
Bowl diameter	Flat base	
Fluid control	Continuous	
Counterbalance	Continuous	
Pan range	360°	
Tilt range	+/-90°	
Temperature range	-40 /+60 °C	-40 /+140 °F

The tripod head weighs in at 13 kg (28.6 lb) and it certainly looks to be a nice alternative to offerings from both O'Connor and Sachtler.



WITHOUT PAN BAR



WITH PAN BAR

The MAXIMA 5.0 knobs and levers have been ergonomically placed for operator ease of use. The tripod head is suitable for studio, location, or outside shooting. The large sliding camera plate is compatible with ARRI, Sony, and O'Connor. The head comes with a telescopic pan bar and a short front pan bar.

Cartoni already has the [MAXIMA 30](#) and MAXIMA 40 heavy-duty tripod heads. The MAXIMA 30 has a payload capacity of 29.9 kg (66 lbs), and the MAXIMA 40 can handle up to 39.92 kg (88 lbs).