

ZEISS Cinema Zoom Lenses

Mount Change Instructions



Introduction



In this manual you learn how to change the mount of a ZEISS Cinema Zoom CZ.2 (abbreviation: ZEISS CZ.2) and how to match it to a digital camera. In order to explain the procedure, this manual uses a ZEISS CZ.2 28 – 80 which is scaled in feet with PL mount. Proceed in the same sequences to switch from or to any other mount that is available for the ZEISS CZ.2 (Canon¹ EF, Nikon² F, Sony³ E and MFT).

Explanation of Symbols



The information symbol indicates additional information, which is useful for the context.



The skip symbol indicates that under certain circumstances you can skip certain steps.



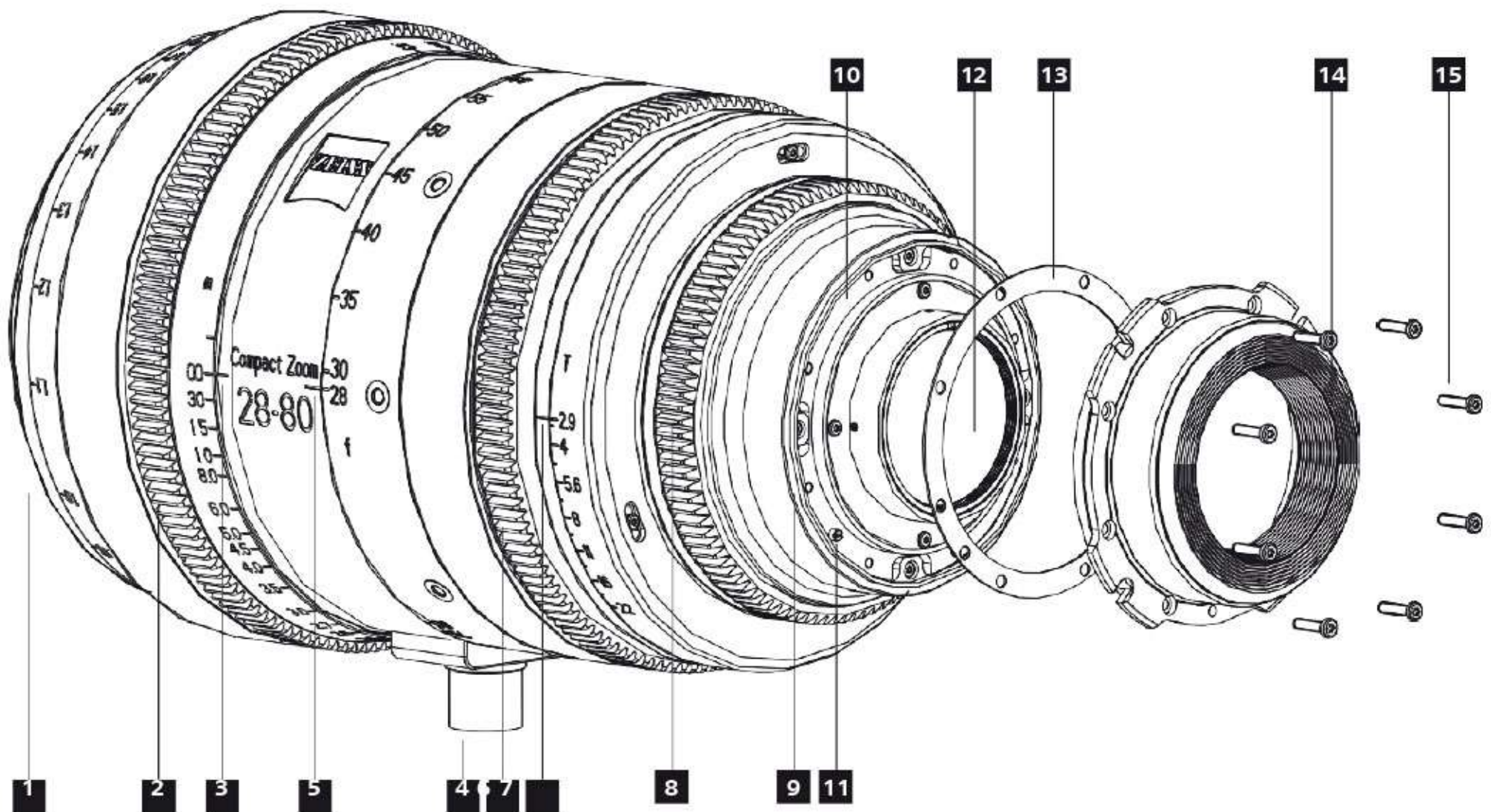
The result symbol indicates information about the obtained result of a step.



The warning symbol indicates dangerous situations and actions, which might impair the functionality of the product, damage the product or hurt the user.

Overview

- | | |
|------------------------------|--|
| 1 front lens | 9 lens barrel |
| 2 focus ring | 10 groove of the lens |
| 3 focus index mark | 11 small screw |
| 4 lens foot | 12 rear lens |
| 5 zoom index mark | 13 shims |
| 6 zoom ring | 14 mount including the black inner ring |
| 7 aperture index mark | 15 T6 screws |
| 8 aperture ring | |



Delivery Contents of a ZEISS CZ.2

- 1x ZEISS CZ.2
- 1x Front cap
- 1x Rear cap
- 1x Focus lever
- 3x Lens support riser 3/8"



Technical Data

	Cinema Zoom 15 – 30 mm	Cinema Zoom 28 – 80 mm	Cinema Zoom 70 – 200 mm
Aperture range	T 2.9 to T 22	T 2.9 to T 22	T 2.9 to T 22
Focal length	15 – 30 mm	28 – 80 mm	70 – 200 mm
Close focus distance ¹	0.55 m / 1'10"	0.83 m / 2'8"	1.51 m / 5'
Length ²	198 mm / 9.92"	196 mm / 7.72"	250 mm / 9.84"
Front diameter	114 mm / 4.49"	95 mm / 3.7"	95 mm / 3.7"
Weight	2.6 kg / 5.7 lbs	2.5 kg / 5.5 lbs	2.8 kg / 6.2 lbs
Horizontal Angle of View			
Full-Frame ³	100 – 62°	66 – 25°	29 – 10°
APS-H ⁴	90 – 54°	57 – 21°	24 – 9°
Super 35 ⁵	79 – 46°	48 – 18°	20 – 7°
Normal 35 ⁶	72 – 41°	43 – 16°	18 – 6°
APS-C ⁷	73 – 42°	43 – 16°	18 – 6°
MFT ⁸	59 – 33°	34 – 12°	14 – 5°

Changing the Mount of a ZEISS CZ.2



In this chapter you learn how to change the mount of a ZEISS CZ.2. The procedure consist of 2 parts which are both mandatory to successfully change a mount. You learn how to detach the currently attached mount and how to attach a different mount. To make sure the ZEISS CZ.2 works properly, additionally complete the subsequent procedure:

[Adjusting a ZEISS CZ.2 to Your Digital Camera.](#)

Detaching a Mount

You need

- ☐ ZEISS CZ.2
- ☐ ZEISS T6 torque wrench with a torque of 0.4 Nm
alternatively: regular T6 torque wrench with a torque of 0.4 Nm
- ☐ ZEISS Interchangeable Mount Set for ZEISS CZ.2



The use of tools offered by ZEISS is highly recommended. You can purchase these tools directly from ZEISS or your trusted ZEISS dealer. See [Mount Change Accessories](#)

Requirements

- ☐ Ensure that your working space is flat and leveled, in order to prevent the lens from tilting and falling over.
- ☐ Ensure that the environment is clean and free from dust so that no dust particles enter the ZEISS CZ.2.
- ☐ Ensure that the front lens cap sits on your ZEISS CZ.2, in order to avoid scratches.

1. Place your ZEISS CZ.2 on a flat surface with the mount facing up and the serial number facing away from you.



The serial number is located at the side of the lens foot.
The serial number varies.

2. Remove the rear lens cap.



You can now see the mount.

3. With a T6 torque wrench remove the torx screws of the mount.

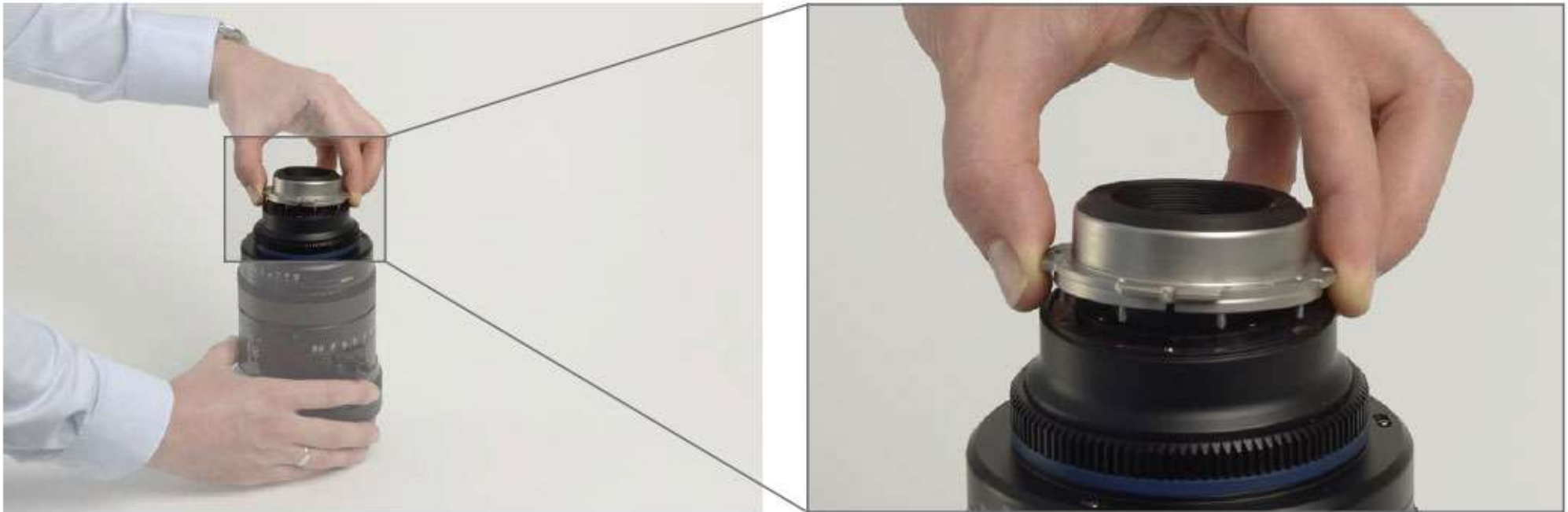


The black inner ring is securely fastened to the mount at the ZEISS factory and does not need to be removed.



The mount is now loose.

4. Carefully detach the mount from your ZEISS CZ.2.

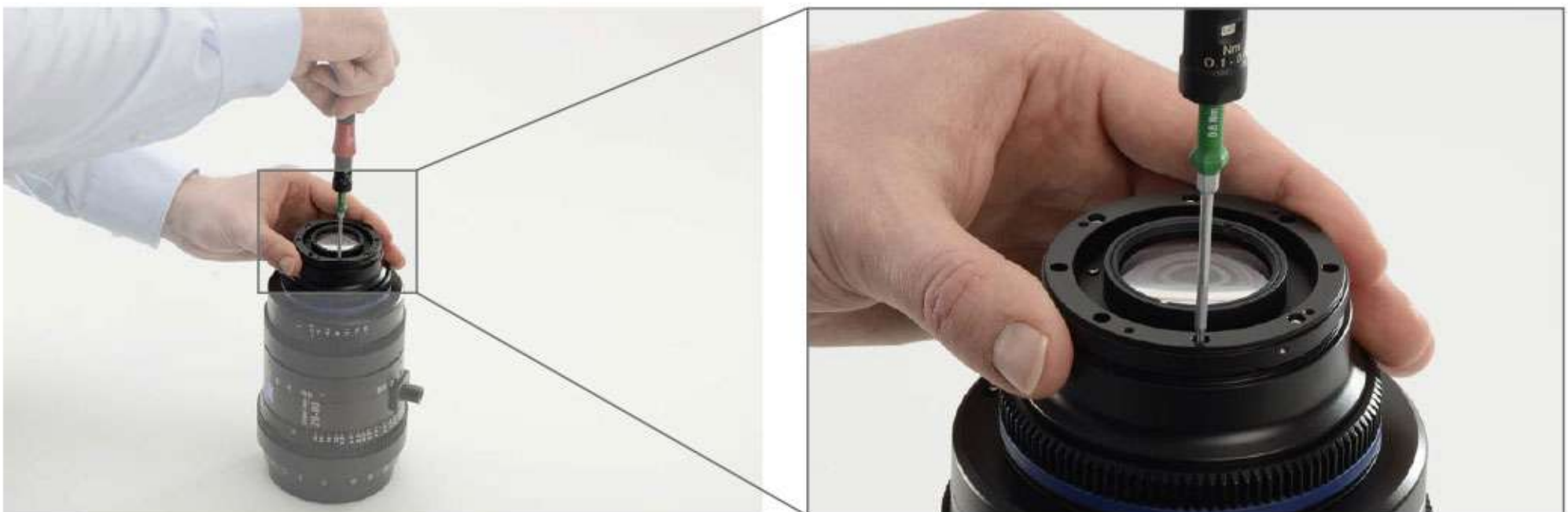


If you are changing from a PL mount, you can directly see the shims.
If you are changing from any other mount than a PL mount, you can now see the black adapter ring.



If you are changing from a PL mount, skip Step 5 and 6, since the PL mount doesn't have an adapter ring.

5. With a T6 torque wrench remove the torx screws of the black adapter ring.



The shape and height of the black adapter ring varies according to the different mounts.



The black adapter ring is now loose.

6. Detach the black adapter ring from your ZEISS CZ.2.



1 groove of the lens 2 shims 3 small screw in the groove of the lens



Now you see the shim(s) and a small screw in the groove of the lens barrel.
You successfully detached the mount



When detaching the mount for the first time, do not remove the shims.
Never remove the small screw in the groove of the lens.

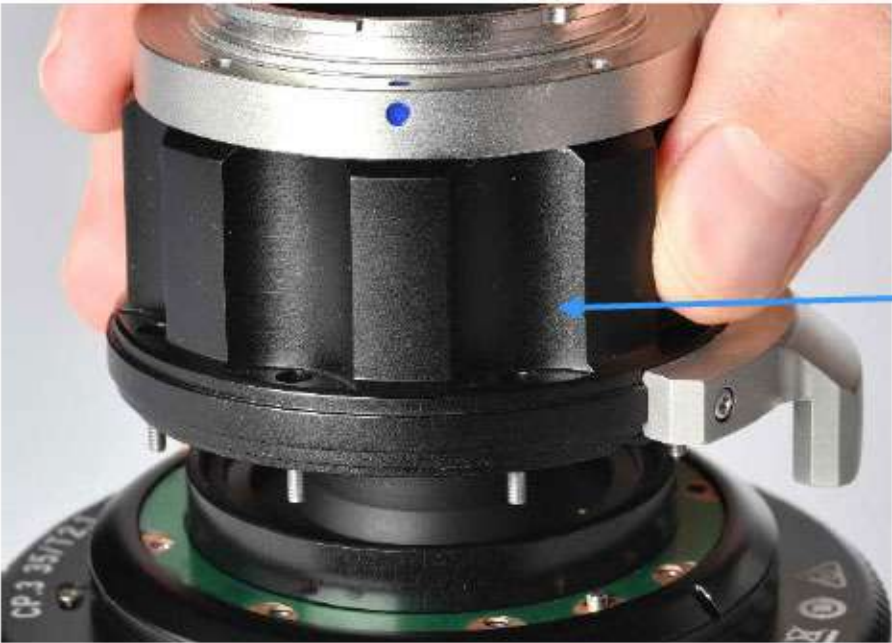


Screws required in order to attach an interchangeable mount

	PL	LPL	EF	EF Spacer	E	E Spacer
Cinema Zoom 2	M2x8	M2x8	M2x8	M2x10	M2x8	M2x10



EF-Mount Spacer



E-Mount Spacer

Attaching a Mount